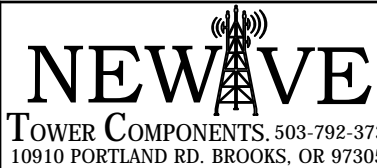


ITEM	PART #	QTY	DESCRIPTION	LENGTH	FINISH	UNIT WT
1	HB24.01	1	24" WIDE WAVEGUIDE BRIDE SUPPORT WELDMENT		HDG	11.97
2	27-4210-005	3	3/8" x 2 3/4" GR.5 HDG FULLY THREADED BOLT			0.10
3	27-5010-005	3	3/8 A36 HDG FLAT WASHER			0.01
4	27-5020-005	3	3/8 HDG LOCK WASHER			0.01
5	27-5030-005	3	3/8" HDG HEX NUT			0.02
6	SFW-716G	3	1/4" PLATE		HDG	0.18
7	27-6090-005	2	GALV. 1/2" x 3 5/8" x 5" U-BOLT ASSEMBLY			0.90

THIS DESIGN AND INFORMATION CONTAINED ON THIS PRINT IS THE PROPERTY OF VALLEY FAB CORPORATION. ANY REPRODUCTION, DUPLICATION OR TRANSFER OF THE PROPRIETARY CONTENT IS PROHIBITED WITHOUT WRITTEN PERMISSION.

**STANDARD TOLERANCES:**

(UNLESS OTHERWISE NOTED)  
 FRACTIONS - 1/16"  
 DECIMALS - 0.01"  
 ANGLES - 0.5°



TOTAL WT: 14.75 LB

QTY:

FINISH:

JOB #:

TITLE:

WAVEGUIDE BRIDGE SUPPORT  
 24" (HORSE HEAD) KIT

DRAWN BY:

DATE:

CHK'D BY:

JG 7/17/2018 KY

DRAWING NO.

HB24

SERIES: COAX ICE BRIDGE

SHEET: 1 OF 1